

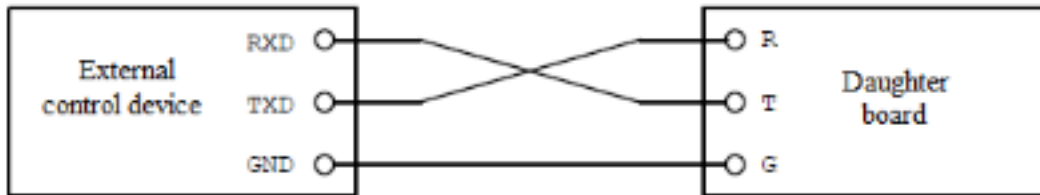


PIEZOMOTION

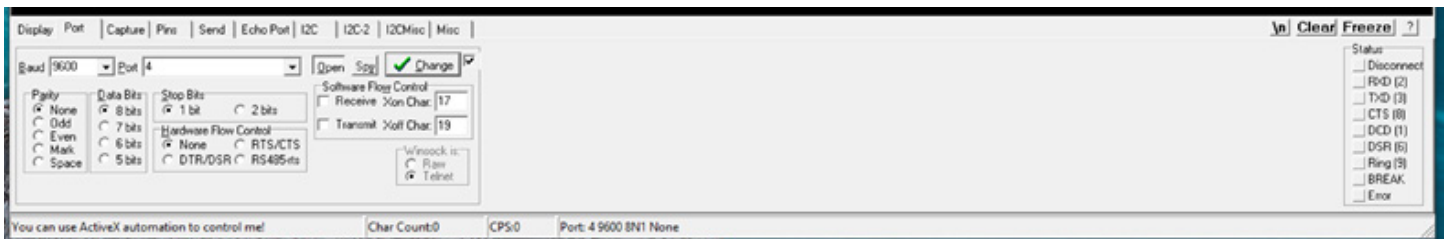
Realterm Serial Communication to Driver Board

Discover **affordable precision** with piezoelectric **innovation**.

1. Connect you USB-to-Serial TTL device to the E-Board



2. Open up RealTerm Serial Capture Program and connect to the E-Board. In this instance my USB-to-Serial TTL device was connect to Comm. Port 4. Click "OPEN" once the Comm Port is configured (Baud Rate: 9600, Parity: None, Stop Bit: 1)



3. Now move to the Display Port and configure this screen to show "Int8" and "Half Duplex"



4. Once configured you are now able to send commands to the driver board. Below is a sample that moves an LCS about a millimeter to the right and a millimeter to the left. The display screen should show the code being send (green) and the return signal from the E-Board (yellow).

